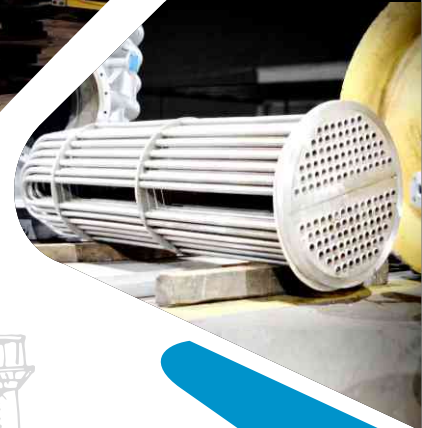
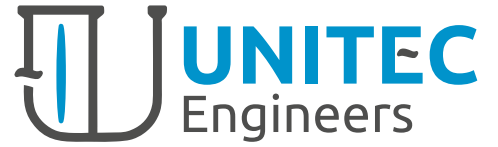


ISO 9001 : 2015



**We
believe
in QUALITY
& CUSTOMER
SATISFACTION**



About us

UNITEC ENGINEERS - Driving Innovation, Inspiring Excellence (ENGINEERING EXCELLANCE FOR RELABLE SOLUTIONS)

At UNITEC Engineers, we have established a renowned reputation under our brand name as a leading player in the industry. Our company, founded in 2018 as a partnership firm, is widely recognized for our commitment to quality and customer satisfaction. Holding ISO 9001-2015 TUV Nord certification, we specialize in the design, construction, and supply of various types of process equipment.

Our products are meticulously crafted in accordance with industry standards such as ASME SEC VIII DIV 1, API 650, API 620, TEMA CLASS B-R-C, ensuring compliance with approved certified inspectors or third-party inspection (TPI) procedures. We collaborate with renowned consultants and TPI agencies like TUV, BVIS, Lloyds, EEE, etc., to subject our products to rigorous quality checks. These checks include metallurgical analysis, X-ray and hydraulic testing, pneumatic assessments, and penetration testing, guaranteeing the highest standards of quality and performance.

With an unwavering dedication to customer satisfaction, we prioritize delivering superior products, adhering to timely schedules, offering competitive pricing, and providing excellent after-sales service. Our team of dedicated professionals is committed to ensuring that your facilities, equipment, projects, and processes comply with all regulations and meet your specific requirements.

Located in Dahej near Rahiyad Crossing Village Galanda GIDC, our company premises span an expansive area of 4000 sq. mtr. Equipped with state-of-the-art machinery and technology, we boast advanced fabrication and machine shops. This enables us to efficiently execute manufacturing processes and consistently deliver exceptional products.

When you choose UNITEC Engineers, you can trust us to operate with integrity, independence, and utmost respect for your business needs. We pride ourselves on building excellence in process equipment and providing total quality solutions within the agreed time frame and at competitive rates.



Our Vision



To become the most trusted brand in manufacturing high-pressure vessels and heat exchangers, while providing exceptional services. We aim to create an inspiring work environment where individuals are motivated to deliver their best abilities.

UNITEC is committed to fulfilling the needs and expectations of our customers, emphasizing the following:

- Quality Management System
- Quality Product
- Quality Service
- Quality Marketing

Our Mission



At UNITEC Engineers, our mission is centered around maintaining a satisfied customer base, a qualitative supplier base, and a highly motivated workforce through the delivery of quality products and services. We are dedicated to surpassing customer expectations and building long-term relationships. To achieve our mission, we are committed to the following:

- Exceeding Customer Expectations
- Building Long-Term Customer Relationships
- Maintaining Quality Products
- Timely Delivery and Performance
- Empowering a Motivated Workforce

Our Values



we attribute our growth and success to the foundation of our core values. These values serve as guiding principles in all aspects of our operations, ensuring that we consistently deliver exceptional products and services.

By embracing teamwork, punctuality, client value, integrity, safety, and excellence, we build a solid foundation for sustained growth, enduring success, and the fulfilment of our customers' needs.

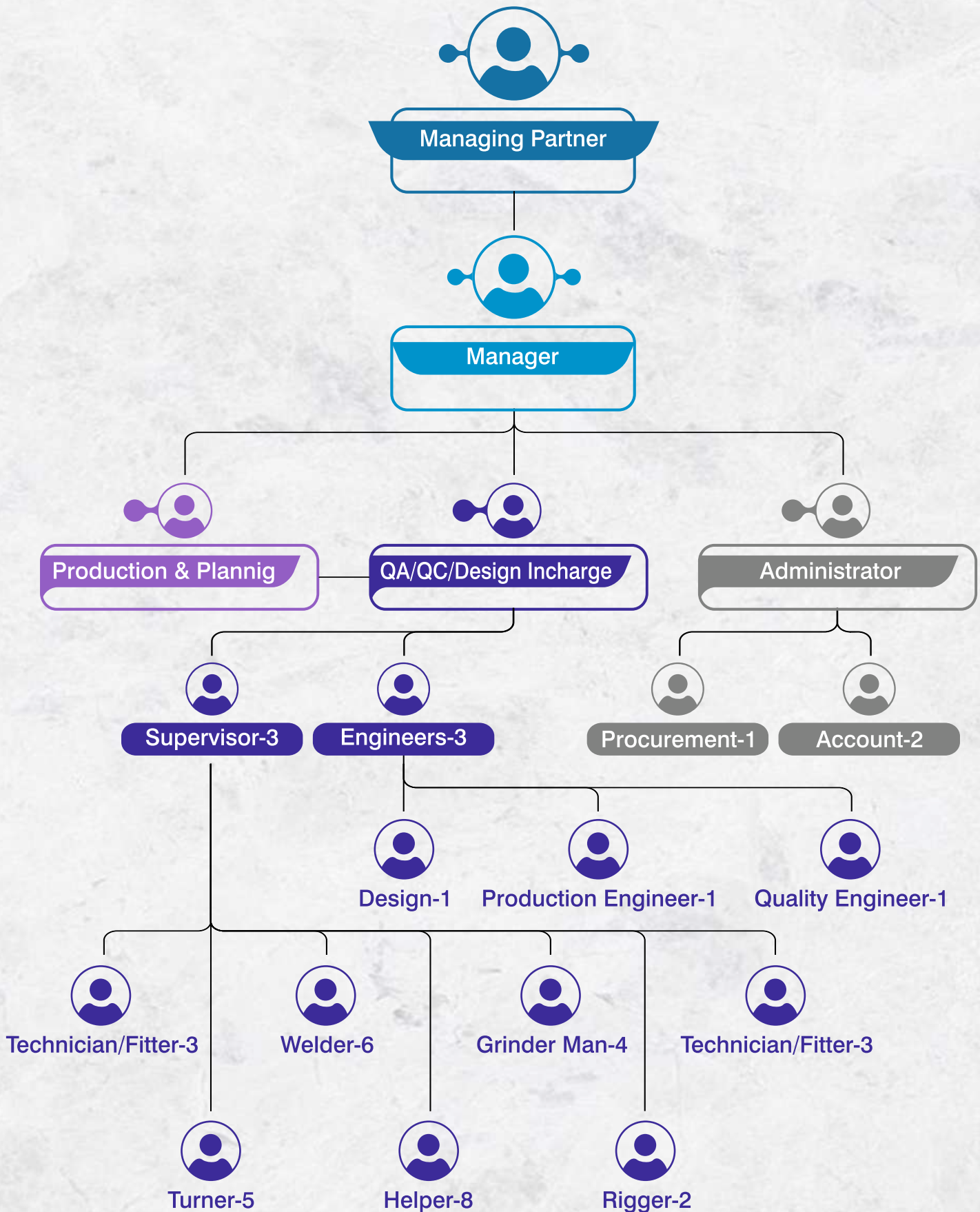


Quality Assurance

- Complying With Various and Applicable Manufacturing Codes Such As ASME, TEMA, API, B31.3 For Process Piping
- Fabrication Control As Per Established Procedure, Approved QAP, ITP, Drawing And Inspection Plan.



Organizational Structure



Factory Intrudes

4000
SQ. METER

**FACTORY
PLOT AREA**

2000
SQ. METER

SHOP FLOOR

50
SQ. METER

OFFICE AREA

20
MT. SQM

**RCC FLOOR
LOADING
CAPACITIES**

90
HP(DGVCL)

**ELECTRIC
SUPPLY**

Our Capabilities

Design

- Customised / Details Design And Engineering
- Design of Heat Exchanger
- Complex Analysis of High Pressure Equipments
- Maintenance And Repair of Pressure Equipments
- Finite Element Analysis
- Agitator Design And Calculation

Products

- Shell And Tube Type Heat Exchangers
- Reactors And High-pressure Vessel
- Condensor / Cooler / Evaporator
- Air Receiver Pressure Tank
- Process Column
- Scrubers
- Repair And Maintenance Of Heat Exchangers / Re-tubing
- Skid Fabrication





Plant and Machinery

Description	Capacity	Quantity
OVERHEAD CRANE	15 MT	1
OVERHEAD CRANE	3 MT	1
HYDRA- ACE	14MT	1
PLATE ROLLING MACHINE	2.5 Mtr WIDTH X 25 MM THK	1
HYDRAULIC PRESS	200 TON	1
PLASMA CUTTING MACHINE	5 MM TO 30 MM	2
SMAW WELDING INVERTER	400 AMP, 600 AMP	12
GTAW WELDING INVERTER	400 AMP,600 AMP	6
RADIAL DRILLING MACHINE	Drill Up to 80 MM	1
PILLAR DRILLING MACHINE	Drill Up to 30 MM	1
MAGNETIC PORTABLE DRILL MACHINE	Drill Up to 100 MM	1
AIR COMPRESSOR	10 HP	1
HYDRO TEST PUMP	0 TO 100 KG/CM2	1
PUG CUTTING MACHINE	UP TO 80 MM	2
LATHE MACHINE	4 FFET	1
LATHE MACHINE	6 FFET	1
LATHE MACHINE	8 FEET	1
LATHE MACHINE	18 FFET	1
POWER HACKSAW	---	2
MILLING AND SLOTTING	---	2
PORTABLE HAND GRINDER	---	15
BENCH GRINDING MACHINE	---	2
MOTHER OVEN	400 OC	1
PORTABLE BAKING OVENS	300 OC	6
CHAIN PULLY BLOCKS	5 TON	5
TANK ROTATORS	5 TO 6 TONS	2
DG SET	125 KVA	2
MANUAL HYDRAULIC TESTING PUMP	40 KG/CM2	5
HYADRAULIC JACKS	100 MT	3
D SHACKLE	1 MT TO 35 MT	20
LIFFING BELT (1M TO 10M)	1 MT TO 20 MT	30
SHOOT/GRIT BLASTING MACHINE	---	1
BLASTING HOPPER	---	1
AIR LESS PAINT GUN	---	1
HE TUBE - VACCUE TEST MACHINE	—	1

The Complete Machine Shop

- All type of inhouse maintenance activities - gear box overhauling, developments of all type of gear etc..
- Shaft machining up to length 7 meter
- Flange or shiping pully maximum outer diameter machining 1800 mm
- Screw conveyor up to length 7 meter
- Weld mettalizing work - SS 316, SS 304, Duplex, Hastalloy, inconal, casting



Range for Maintenance and Service

Unitec introduces a revolutionary approach to Machining and Maintenance activities in a Machine shop, transforming the conventional methods.

Unitec presents an advanced machine shop equipped with a comprehensive range of cutting-edge tools and equipment. Our facility includes a lathe machine capable of handling lengths up to 6 meters, along with milling, slotting, surface grinding, and radial drilling capabilities. Moreover, we specialize in the development of shafts with diameters range up to 300 mm and length up to 6.5 meters, utilizing various high-quality materials such as SS 316, SS 304, Duplex, Inconel, and Hastelloy. Our expertise ensures precision and excellence in every machining project we undertake.

Range For Machining Work		
Description	Material of Construction	Range
Develpoment Of Shaft	SS 316, SS 304, EN8, EN19, EN 24, Hastalloy, Hastalloy Claded	Diameter Up To 300 mm And Length 6.5 Meter
Development Of Screw Conveyor Shaft	SHAFT – SS 316, SS 304, EN8, EN19 , EN 24 FLIGHT – SA 516, SS 316, SS 304	Diameter Up To 300 mm And Length 6.5 Meter
Spur Gear, Helical Gear, Rack And Pinion, Worm And Worm Wheel S		
Agitator Assembly – With Bearing Housing, Seal Installation	SS 316, SS 304, EN8, EN19, EN 24, Hastalloy, Hastalloy Claded	Diameter Up To 300 mm And Length 6.5 Meter
Rvpd Rotor	SS 316, SS 304, EN8, EN19, EN 24, Hastalloy, Hastalloy Claded	Up To Sweep Dia 1500 mm And Length 5.5 Meter
Dynamic Balancing	SS 316, SS 304, EN8, EN19, EN 24, Hastalloy, Hastalloy Claded, Frp	Diameter Up To 1800 mm And Weight 2100 Kg
Muff Coupling	SS 316 , Cast Iron	SMC 20 To SMC 280
Flange Machining	SS 316, SA 516 GR 60/70, IS 2062 GR B, SA 105	Diameter Up To 2200 m
Shiping Crane Pully Gotwal Make And Lieberr	MS	34 Inch To 50 Inch
Rotory Valve Rotor	SS 316, SS 304, MS	Up To 22 Inch

Range For Maintenance Work	
Re- Tubing Of Heat Exchanger & Overhauling Work	Tube Up To 60.33 And Exchanger Length Up To 6 Meter
Centrifugal Pump And Vacuum Pump	Replacement Of Bearing, Housing Inside Bearing Size By Weld Metallizing Of Cast Iron Welding Of Machinable And Non Machinable For Cast Iron Development Of Shafting And Seal Fitting Work
Gear Box Repairing	Overhauling And Development Of New Gear Bearing Replacement, Repeated Failure Analysis
On Site – Off Site Heat Exchanger Flange Serration Work	Tube Sheet / Flange Outer Diameter 600 To 1800 mm
Rotary Vacuum Paddle Dryer	Overhauling And Rotor Balancing And Machining Bearing Replacement Heating / Cooling Half Coil Repairing Work
Rotor Repairing Work	Weld Metallizing On Shaft And Body Cover Etc...
Screw Conveyor	Screw Machining Work And Alignment Work And Overhauling Work

Range of Product – Manufacturing

We at UNITEC ENGINEERS are committed to enhance internal and external customer satisfaction by developing new products and meeting customer requirements in the field of Fabrication & Manufacturing.

In House Fabrication			
Vessel	1 KL To 70 KL	IS 2062 GR B, SA 516 GR 60/70, SA 240 GR 316L AND SS 304	ASME Sec VIII DIV 1
Storage Tank	5 KL To 100 KL	IS 2062 GR B, SA 516 GR 60/70, SA 240 GR 316L AND SS 304	API 650
Heat Exchanger & Condensor	UP 150 M2	IS 2062 GR B, SA 516 GR 60/70, SA 240 GR 316L AND SS 304	Tema Class B
Reactor	1 KL To 40 KL	IS 2062 GR B, SA 516 GR 60/70, SA 240 GR 316L AND SS 304	ASME Sec VIII DIV 1
MSRL Tank	1 KL To 100 KL	IS 2062 GR B + IS 4682 Rubber Line	Rubber Line IS4682 PART-1
Column	Up To 100 M3	IS 2062 GR B, SA 516 GR 60/70, SA 240 GR 316L AND SS 304	ASME Sec VIII DIV 1
Piping Spool Pic	½ Inch To 24 Inch	SA 106 GR B TO SA 516 GR 60/70, SS 316L, SS 304L	B31.3 Latest Addition

Product Gallery



Consistently Serving Industries



OIL AND GAS



CHEMICAL



PETROCHEMICAL



PHARMACEUTICAL



FERTILIZERS



SHIP BUILDING



THERMAL POWER PLANT

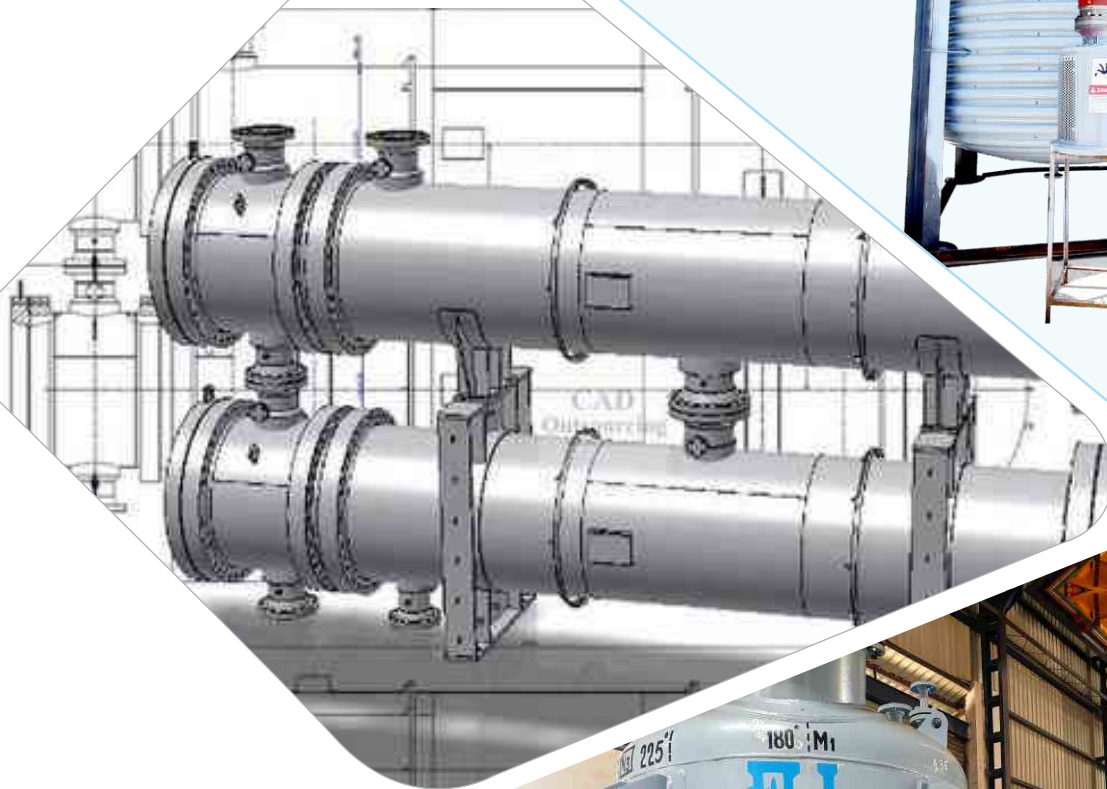


Our Reputed Clients



Engineering Excellence

for Reliable Solutions



- 📍 Plot No. D2/E/193 & 194, GIDC, Phase-2, Dahej, Village - Galenda, Ta. Vagra, Dist. Bharuch 392130
- 🌐 info@unitecengineers.co.in
- ✉️ www.unitecengineers.co.in
- ☎️ +91 96247 11234 | +91 99049 11234